

File: WildcardXT.kicad\_pcb

Sheet: 1/1

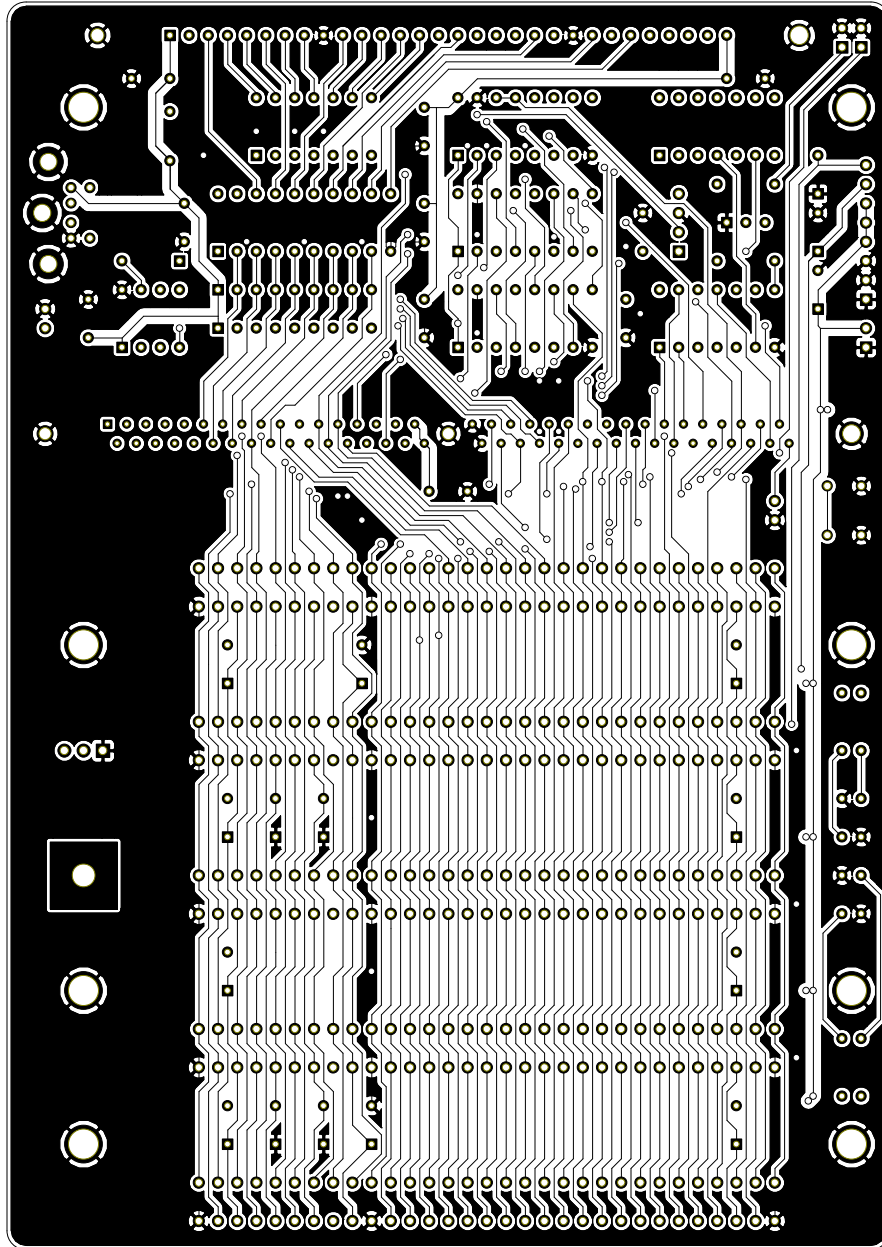
Title:

Size: USLetter Date:

KiCad E.D.A. pcbnew (2013-07-07 BZR 4022)-stable

Rev:

Id: 1/1



File: WildcardXT.kicad\_pcb

Sheet: 1/1

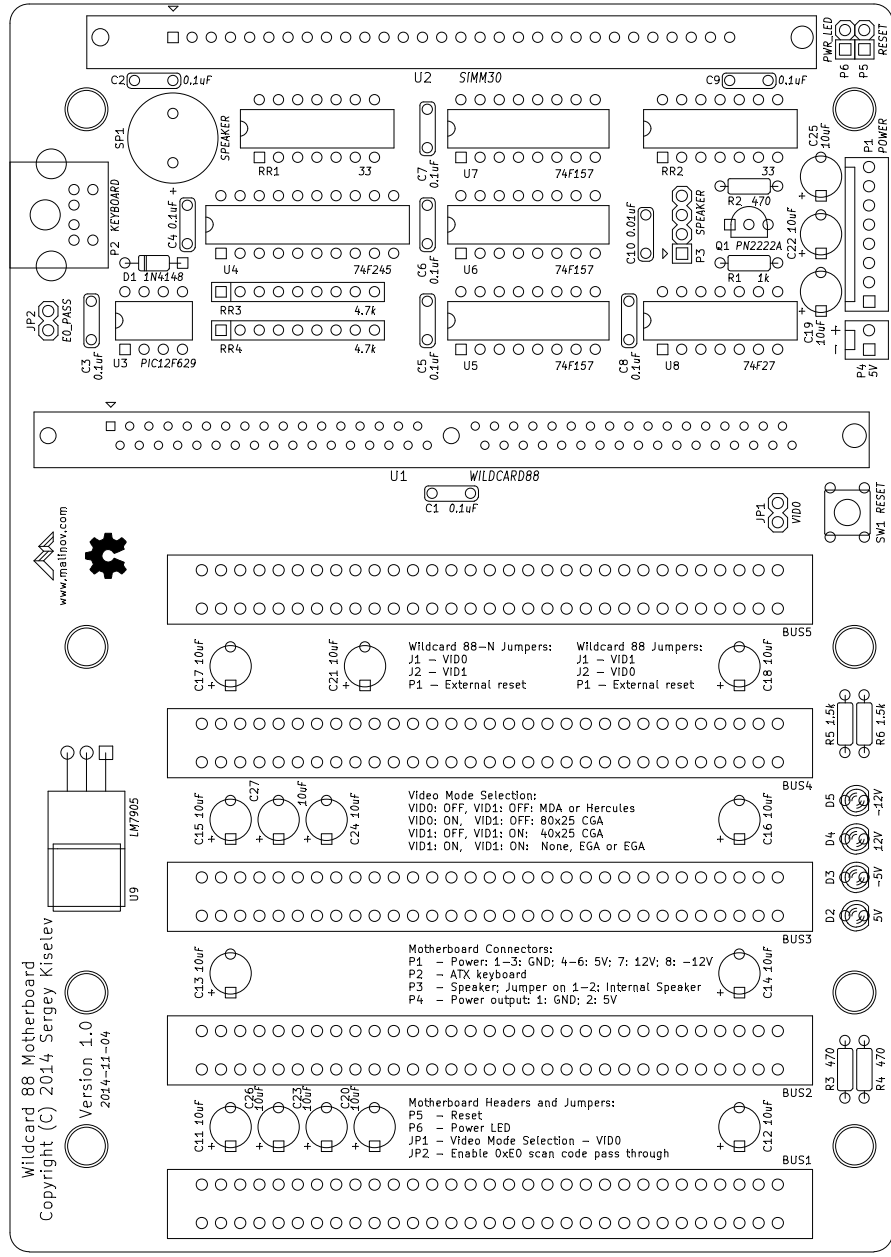
Title:

Size: USLetter Date:

KiCad E.D.A. pcbnew (2013-07-07 BZR 4022)-stable

Rev:

Id: 1/1



Wildcard 88 Motherboard  
 Copyright (C) 2014 Sergey Kiselev  
 Version 1.0  
 2014-11-04

**Wildcard 88-N Jumpers:**  
 J1 - VID0  
 J2 - VID1  
 P1 - External reset

**Wildcard 88 Jumpers:**  
 J1 - VID0  
 J2 - VID1  
 P1 - External reset

**Video Mode Selection:**  
 VID0: OFF, VID1: OFF: MDA or Hercules  
 VID0: ON, VID1: OFF: 80x25 CGA  
 VID1: OFF, VID1: ON: 40x25 CGA  
 VID1: ON, VID1: ON: None, EGA or EGA

**Motherboard Connectors:**  
 P1 - Power: 1-3; GND: 4-6; 5V: 7; 12V: 8; -12V  
 P2 - ATX keyboard  
 P3 - Speaker; Jumper on 1-2: Internal Speaker  
 P4 - Power output: 1: GND; 2: 5V

**Motherboard Headers and Jumpers:**  
 P5 - Reset  
 P6 - Power LED  
 JP1 - Video Mode Selection - VID0  
 JP2 - Enable 0xE0 scan code pass through

File: WildcardXT.kicad_pcb	
Sheet: 1/1	
Title:	
Size: USLetter	Date:
KiCad E.D.A. pcbnew (2013-07-07 BZR 4022)-stable	Rev:
	Id: 1/1