

File: isa_fdc.brd

Sheet: 1/1

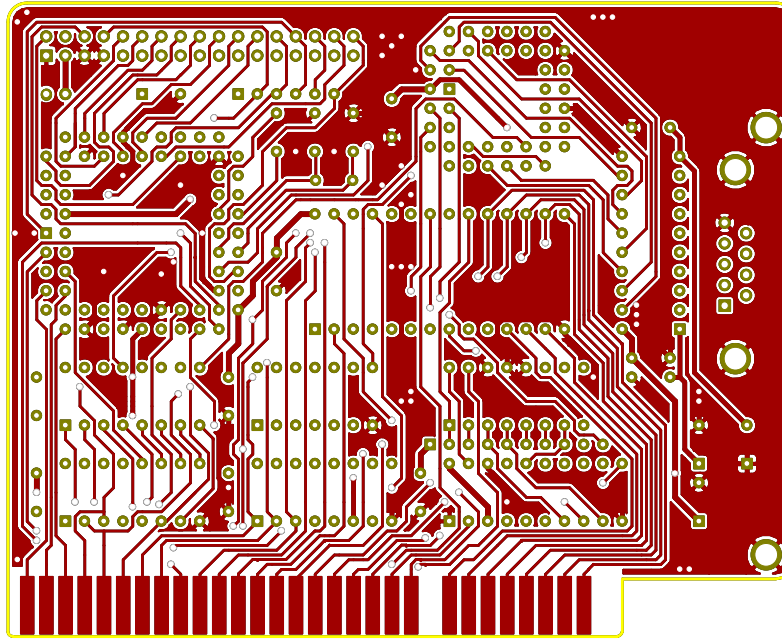
Title:

Size: User Date: 21 dec 2012

KiCad E.D.A. pcbnew (2012-01-19 BZR 3256)-stable

Rev:

Id: 1/1



File: isa_fdc.brd

Sheet: 1/1

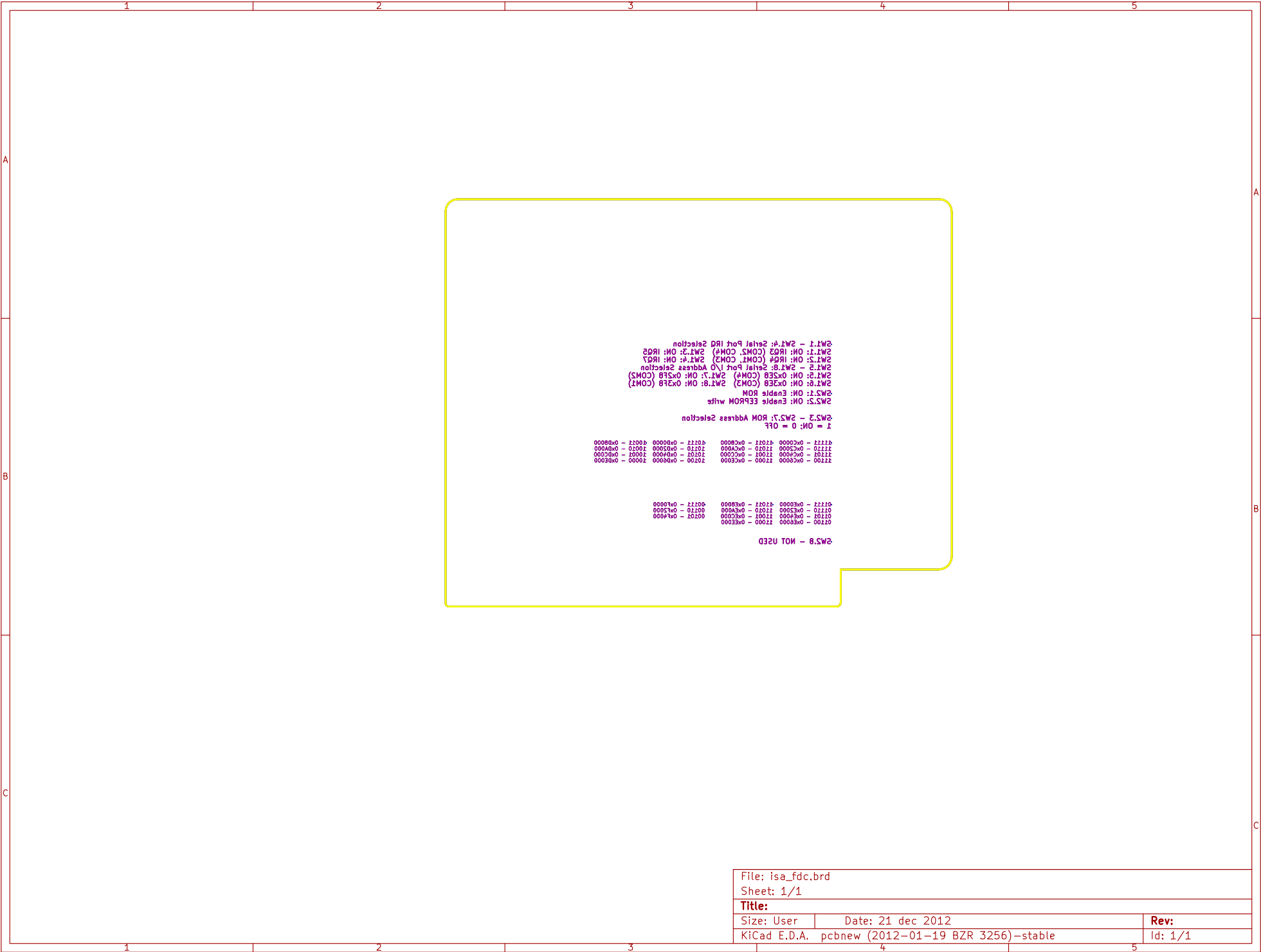
Title:

Size: User Date: 21 dec 2012

KiCad E.D.A. pcbnew (2012-01-19 BZR 3256) -stable

Rev:

Id: 1/1

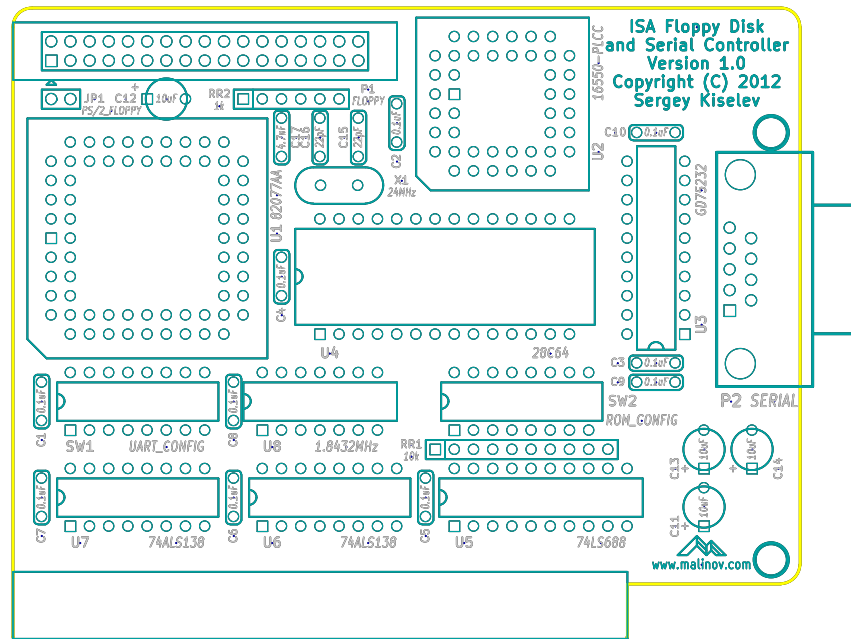


SW1.1 - SW1.4: Serial Port I/O Selection
 SW1.1: ON: IRQ3 (COM2, COM4) SW1.2: ON: IRQ2
 SW1.3: ON: IRQ4 (COM1, COM3) SW1.4: ON: IRQ5
 SW1.5 - SW1.8: Serial Port I/O Address Selection
 SW1.5: ON: 0x3E8 (COM4) SW1.6: ON: 0x3F8 (COM1)
 SW1.7: ON: 0x3E8 (COM3) SW1.8: ON: 0x3F8 (COM2)
 SW2.1: ON: Enable ROM
 SW3.1: ON: Enable EPROM Write

SW3.2 - SW3.7: ROM Address Selection
 I = ON: 0 = OFF
 41111 - 0xC0000 41011 - 0xC8000
 11110 - 0xC5000 11010 - 0xC9000
 11110 - 0xC6000 11010 - 0xCA000
 11110 - 0xC7000 11010 - 0xCB000
 11110 - 0xC8000 11010 - 0xCC000
 11110 - 0xC9000 11010 - 0xCD000
 11110 - 0xCA000 11010 - 0xCE000
 11110 - 0xCB000 11010 - 0xCF000
 11110 - 0xCC000 11010 - 0xD0000
 11110 - 0xCD000 11010 - 0xD4000
 11110 - 0xCE000 11010 - 0xDC000
 11110 - 0xCF000 11010 - 0xE0000
 11110 - 0xD0000 11010 - 0xE4000
 11110 - 0xE0000 11010 - 0xF0000
 11110 - 0xF0000 11010 - 0x100000

SW3.8 - - NOT USED

File: isa_fdc.brd		
Sheet: 1/1		
Title:		
Size: User	Date: 21 dec 2012	Rev:
KiCad E.D.A. pcbnew (2012-01-19 BZR 3256)-stable		Id: 1/1



File: isa_fdc.brd

Sheet: 1/1

Title:

Size: User Date: 21 dec 2012

KiCad E.D.A. pcbnew (2012-01-19 BZR 3256)-stable

Rev:

Id: 1/1