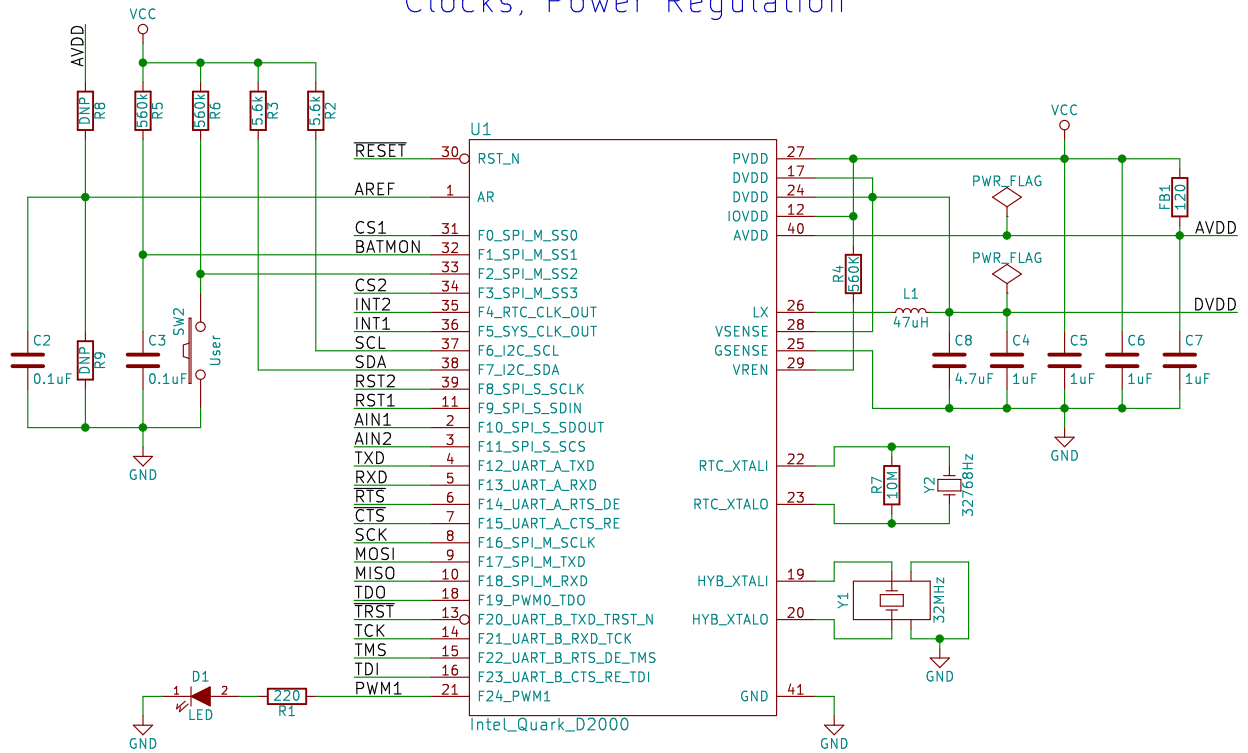
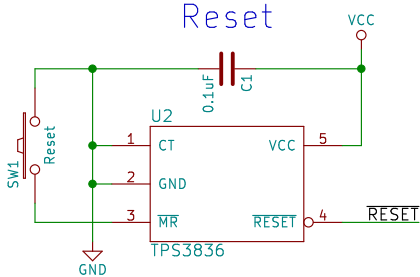


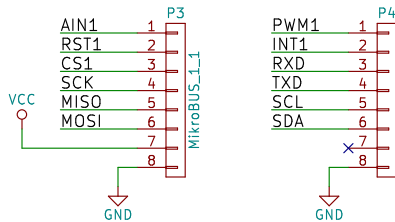
# Intel Quark D2000 MCU Clocks, Power Regulation



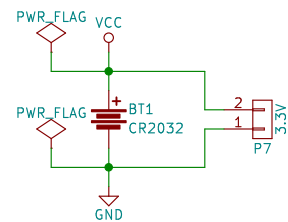
## Reset



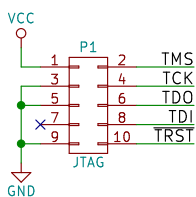
## MikroBUS 1



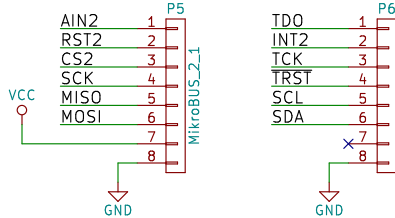
## Power Supply



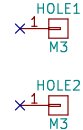
## JTAG



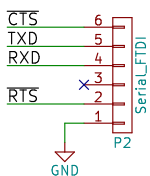
## MikroBUS 2



## Mounting Holes



## FTDI Serial



Sheet: /  
File: D2000\_Dual\_MikroBUS.sch

### Title:

Size: USLetter Date:  
KiCad E.D.A. kicad 4.0.1-stable

Rev:  
Id: 1/1